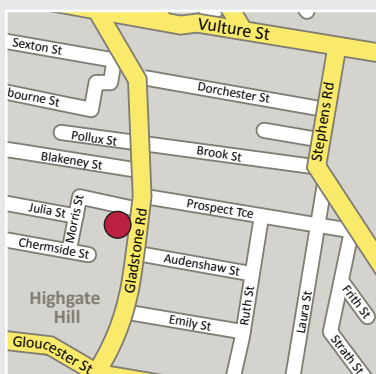


To download a copy of the current class schedule or to find more information on classes and to reserve a place visit [www.brisbaneartworkshops.com.au](http://www.brisbaneartworkshops.com.au) or phone for a fact sheet.



Clayton J. Beck III (USA) Workshop demonstration



**Venue address:**

**49 Gladstone Road, cnr Morris Street,  
Highgate Hill, BRISBANE QLD 4101**

**All mail to postal address:**

**PO Box 3201, Newmarket QLD 4051**

**Enquiries: 0402 342 421 (Krisstie)**

[krisstie@brisbaneartworkshops.com.au](mailto:krisstie@brisbaneartworkshops.com.au)

**BrisbaneArtistsAcademé** incorporating Brisbane Art Workshops  
ABN 83 143 669 087

Note: Several off-street car parks available. Bus at door and train 10-15 minute walk. Centrally located near Southbank and West End, we are accessible by all major arterial roads.

# Annual Scholarship Awards Art Exhibition

Non-Acquisitive Awards\*



Don Milner

Brisbane Artists Academe (BAA) and Brisbane Art Workshops (BAW) invite students to submit paintings into the annual Scholarship Awards Exhibition. The Awards promote excellence in both traditional and contemporary painting genres. Refer to the application form for current prize values and details of awards. Prizes are at the judges' discretion.

\* Conditions apply

For more information or to enter visit:  
[www.brisbaneartworkshops.com.au](http://www.brisbaneartworkshops.com.au)

Brisbane  
**Artists**  
Academé  
Incorporating Brisbane Art Workshops



Fu Hong

Fine Art Training

**We offer** technical skills-based training in oils, acrylics and watercolour within a contemporary framework, working directly from life where possible to help you realise your creative vision. Mentoring and studio programs available.

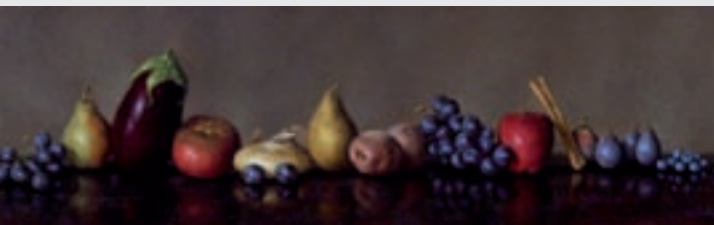
**We will teach** you practical Fine Art training not found in university art departments, which are now focused on academic outcomes, therefore fill a void in current education offerings. Studying various technical approaches will enable you to express your creative vision with confidence. Students are encouraged to work individually to find the best method to suit their needs.

**Alla Prima** or **Direct Painting** means finishing a painting in one sitting. Artists work from life and the method is used to paint portraits, landscapes and still life in a set time frame. The method is like Impressionism and looks like a painterly sketch. (Refer to such artists as Richard Schmid, David Leffel and Sargeant). No effort is made to hide the brush stroke, and the surface is lush with paint.



Kristie Byrme – Principal Instructor

**A Classical or Traditional Painting Approach to Realism** involves fine drawing and tonal underpainting followed by glazing to build up the layers. A slow and steady approach to solving the problems painters encounter. Work from life, drawings &/or photographs. Great method if you like to take your time to bring a painting to completion. A preferred method for complicated subjects, for super-realism or surrealism.



Clinton T. Hobart (USA)

**What about drawing?** Painting and drawing is not easily separated as defined in the Archibald Court Case 2006. It doesn't matter what medium you use, wet or dry, drawing is intrinsic to the expressive mark. There is no single right way to learn how to draw. Drawing is about learning how to see. Drawing on the Right Side of the Brain is a particular method of thinking about how we see. Learning how to see will accelerate and fast-track your drawing ability faster than any academic approach.



Colley Whisson

**Why Study from Life?** Painting the portrait from life facilitates self-learning. Getting a likeness and capturing character and emotions is a nuance of style and the expressive stroke of the brush. The still life is your best option when you don't have access to a live model or can't be out in the landscape.

**Testimonial:** *"All my life I have wanted to paint ... but ... finding a place where I can learn and be inspired – and afford it – hasn't been easy... I applied for a Scholarship and was fortunate to win one. What a rewarding, enlightening, challenging year it's been! So much more than just a financial help – as well as term classes, I attended master workshops learning from internationally acclaimed artists.*

*Kristie has been extraordinarily generous with her time, friendship and encouragement and has made it easy to want to be involved in the Academé. I commend her on her determination to follow her dream of offering Brisbane quality workshops with internationally renowned artists and term classes with the best of our Australian artists.*

*Susan Trimble, Camp Hill, Brisbane*

Cees Sliedrecht



Lyn Dieffenbach

**More Benefits**

- International, national and local artists
- Annual Scholarship Awards (Beginners and Advanced)
- Classes for absolute beginners to masterclasses
- Technical skills based training
- Day and evening term classes and weekend workshops
- Pro-rata available – start anytime
- Flexible attendance (some term classes only)
- Recommended art supplies and books available
- 5% student and pensioner discount
- Loyalty program



Kristie Byrme – Principal Instructor